



# Adlington St Paul's CE Primary School

Railway Road | Adlington | Chorley | PR69QZ

E | [bursar@adlingtonstpauls.lancs.sch.uk](mailto:bursar@adlingtonstpauls.lancs.sch.uk)

March 17th 2025

T | 01257 480276

W | [www.adlingtonstpauls.lancs.sch.uk](http://www.adlingtonstpauls.lancs.sch.uk)

## Upcoming Events

### Wednesday 19th and Thursday 20th

SCARF workshops for whole school linked to Mental Health and Wellbeing

### Thursday 20th March

Be Happy Day—themed school lunch

### Friday 21st March

Divergent Drama workshops for Y1 and Y5

### Wednesday 26th March

Y3 Trust trip to Liverpool

### Saturday 29th March

Cross Country event at Astley Park  
10am followed by a family fun run at 1140am

### Wednesday 2nd April

Class Photos

### Friday 4th April

Trainer Day in exchange for chocolate for our Easter Bingo event

### Thursday 10th April

Easter Family Bingo 330pm in the school hall

'Whatever you do, work at it with all your heart'. Colossians 3

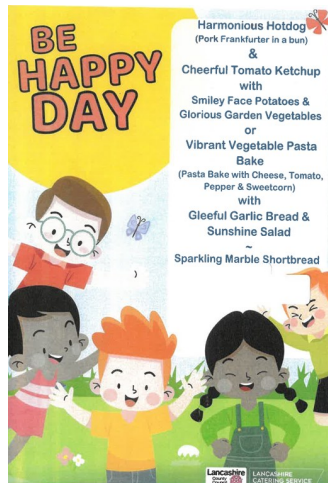
# School Newsletter

Dear Parents and Carers,

Huge thanks to Mrs Sanderson, our community leaders and Eco after school club and our wonderful parent and carer team who helped to plant our new hedgerow. We are looking forward to watching it grow and create a new habitat within our school grounds to support us with our learning but to also help our planet.



Our annual family Easter Bingo event will be on Thursday 10th April after school from 330pm in the school hall. A huge thanks to our incredible PTFA for organising this event. We will be having a trainer day on Friday 4th April in exchange for chocolate donations for our Easter Bingo event. More information to follow soon.



Chorley Sports Cross Country event will be on Saturday 29th March registration will be open from 845am and the races will begin at 10am. Following this event there will be a family fun run at approximately 1140am.

If you wish to take part in the family fun run, please contact the school office via [bursar@adlingtonstpauls.lancs.sch.uk](mailto:bursar@adlingtonstpauls.lancs.sch.uk) or 01257 480276 so that we can inform Chorley Sports of numbers who will be attending the event. Letters will be sent out to children taking part in the other races for Y3/4 and Y5/6.

Please can you ensure that your child's PE kit is in school. At the moment, with PE lessons, dance festival rehearsals and other events that take place, it is essential that your child's PE kit is in school every day.

Many thanks for you support, Mrs Burger

## Attendance

Reception	99%
Year 1	92%
Year 2	95%
Year 3	95%
Year 4	98%
Year 5	97%
Year 6	99%
Whole School	96%

FRIENDS OF ADLINGTON LIBRARY

## EASTER CRAFTS

**ON THURSDAY 17TH APRIL**  
**9.45am to 10.45am or**  
**11am to 12pm**  
**EASTER BUNNIES TO MAKE AND DECORATE PLUS**  
**AN EASTER EGG HUNT**  
**\*\*\*booking recommended\*\*\***  
**BOOK YOUR PLACE ON LINE AT LCC OR AT ADLINGTON LIBRARY OR RING 07955507734**  
**FIND US ON FACEBOOK, X, AND INSTAGRAM**

@QualitySport Holiday Clubs @qualitysportholidayclubs

## CHORLEY EASTER SPORTS HOLIDAY CLUB!

Fun Activities for children aged 4-12 years

**07-11 APRIL 2025** SPORTS • GAMES • FUN  
 LOCATION: ST GEORGES PRIMARY SCHOOL, CARR LN, PR7 3JU

**14-17 APRIL 2025** • BOOK ONLINE TODAY!  
 TIME: 9:30am - 5:30pm  
 HAF TIME: 9am - 1pm OR 12pm - 4pm

BOOK ONLINE TODAY AT:  
[www.qualitysport.co.uk](http://www.qualitysport.co.uk)

HAF FUNDED PLACES AVAILABLE!

\*Please note that HAF bookings for this site are taken through Holiday Activities\*

Contact Us:  
 Website: [www.qualitysport.co.uk](http://www.qualitysport.co.uk)  
 Email: [info@qualitysport.co.uk](mailto:info@qualitysport.co.uk)  
 Telephone: 07507579452

Department for Education Ofsted  
 Lancashire County Council

# Adlington St Paul's CE Primary School

Railway Road | Adlington | Chorley | PR69QZ

E | [bursar@adlingtonstpauls.lancs.sch.uk](mailto:bursar@adlingtonstpauls.lancs.sch.uk)

T | 01257 480276

W | [www.adlingtonstpauls.lancs.sch.uk](http://www.adlingtonstpauls.lancs.sch.uk)



'Whatever you do, work at it with all your heart'. Colossians 3

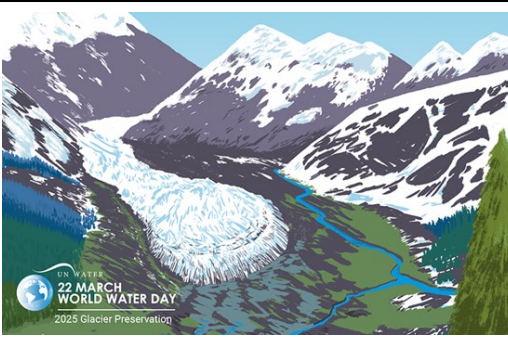
ADLINGTON ST PAUL'S HOLIDAYS 2024-2025		
Term	Holiday Dates	
Autumn Term 2024	<b>Inset Day</b>	Monday 2nd September 2024
	<b>Term begins</b>	Tuesday 3rd September 2024
	<b>Half term</b>	Monday 21st to Friday 25th October 2024
	<b>Term Ends</b>	Friday 20th December 2024
Spring Term 2025	<b>Inset Day</b>	Monday 6th January 2025
	<b>Term begins</b>	Tuesday 7th January 2025
	<b>Half term</b>	Monday 17th to Friday 21st February 2025
	<b>Term ends</b>	Friday 11th April 2025
Summer Term 2025	<b>Easter Holidays</b>	Monday 14th to Monday 21st April 2025
	<b>Inset Day</b>	Tuesday 22nd April 2025
	<b>Term begins</b>	Wednesday 23rd April 2025
	<b>Bank holiday</b>	Monday 5th May 2025
	<b>Half term</b>	Monday 26th May to Wednesday 4th June 2025
	<b>Inset Day</b>	Thursday 5th June 2025
	<b>Inset Day</b>	Friday 6th June 2025
	<b>Term ends</b>	Friday 18th July 2025

Adlington St. Paul's Holidays 2025-2026		
Term	Holiday Dates	
Autumn Term 2025	<b>Inset Day</b>	Monday 1st September 2025
	<b>Term Begins</b>	Tuesday 2nd September 2025
	<b>Inset Day</b>	Friday 24th October 2025
	<b>Half Term</b>	Monday 27th – Friday 31st October 2025
	<b>Term Ends</b>	Friday 19th December 2025
Spring Term 2026	<b>Inset Day</b>	Monday 5th January 2026
	<b>Term Begins</b>	Tuesday 6th January 2026
	<b>Half Term</b>	Monday 16th – Friday 20th February 2026
	<b>Term Ends</b>	Thursday 2nd April 2026
	<b>Easter Holidays</b>	Friday 3rd April – Friday 10th April 2026
Summer Term 2026	<b>Term Begins</b>	Monday 13th April 2026
	<b>Bank Holiday</b>	Monday 4th May 2026
	<b>Half Term</b>	Monday 25th May – Friday 5th June 2026
	<b>Inset Days</b>	Thursday 4th June Friday 5th June 2026
	<b>Term Ends</b>	Friday 17th July 2026

## ECO News

### Glacier Preservation

Our glaciers are melting faster than ever. As our planet gets hotter, our frozen world shrinks making our water cycle more unpredictable (the great British weather!) Glaciers are critical to life – their meltwater is essential for drinking water, agriculture, industry, clean energy production and healthy ecosystems. Rapidly melting glaciers are causing uncertainty to water flows, with profound impacts on people and the planet. Global reductions in carbon emissions and local strategies to adapt to shrinking glaciers are essential. This World Water Day, we must work together to put glacier preservation at the core of our plans to tackle climate change and the global water crisis.



In school this week we will be looking at our school and working closely with our community leaders to see how we can make our environment more eco- friendly.

### Reminders for our school community

We are looking for donations of indoor plant for our school, please drop them off at the school office. Your donations would be much appreciated to enhance our learning environments in school.

Please also remember that we are able to recycle your batteries. If you have any used batteries that you need to dispose of, we have a box situated in the main office. You can drop your used batteries at the office with Miss Harrison.

Thank you for supporting us in our quest to improve our school and environment. Mrs Sanderson and the Community Leaders